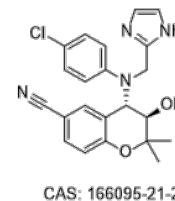


**Product Name** : BMS191095  
**Cat. No.** : PC-22096  
**CAS No.** : 166095-21-2  
**Molecular Formula** : C<sub>22</sub>H<sub>21</sub>ClN<sub>4</sub>O<sub>2</sub>  
**Molecular Weight** : 408.89  
**Target** : Potassium Channel  
**Solubility** : 10 mM in DMSO



## Biological Activity

BMS191095 (BMS-191095) is a selective ATP-sensitive potassium channel (KATP) opener, exhibits antiischemic (cardioprotective) potency with EC<sub>25</sub> of 1.4 μM.

BMS191095 is over 20- and 4000-fold more selective for the ischemic myocardium than BMS-180448 and cromakalim.

BMS191095 is devoid of peripheral vasodilating activity while retaining glyburide-reversible cardioprotective activity.

BMS-191095 improved postischemic recovery of function and reduced lactate dehydrogenase release in the isolated rat hearts.

BMS-191095 opened cardiac mitochondrial K(ATP) with a K(1/2) of 83 nM.

## References

Rovnyak GC, et al. J Med Chem. 1997 Jan 3;40(1):24-34.

Grover GJ, et al. J Pharmacol Exp Ther. 2001 Jun;297(3):1184-92.

**Caution: Product has not been fully validated for medical applications. Lab Use Only!**

E-mail: tech@probechem.com